

【TY531系列产品介绍】

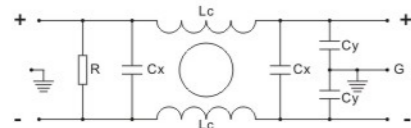
- 极佳的共模和差模干扰抑制性能;  
Excellent interference-suppression for CM and DM
- 电流量大, 工作电流从 25 A 到 2500 安培;  
Large working current, covering 25 A to 2500 A
- 采用低成本设计方案, 性价比高;  
High quality and low cost design
- 用于光伏逆变, 以及各种直流滤波场合。  
Application for PV inverter, as well as other DC applications.



Schematic

电气原理图

滤波器匹配表



规格 Filter	端接方式 Terminal	额定电流 Rated current	功率损耗 Power loss	重量 Weight	尺寸图 Pic
TY531M-25		25A	5W	0.5kg	FIG1
TY531M-50		50A	12W	1.0kg	FIG2
TY531M-75		75A	12W	2.3kg	FIG3
TY531M-100		100A	15W	2.5kg	FIG3
TY531M-150		150A	18W	3.5kg	FIG4
TY531T-250		250A	8W	4.5kg	FIG5
TY531T-400		400A	14W	5.0kg	FIG6
TY531T-600		600A	25W	6.0kg	FIG7
TY531T-800		800A	25W	7.0kg	FIG8
TY531T-1000		1000A	38W	7.0kg	FIG8

Electrical Specs

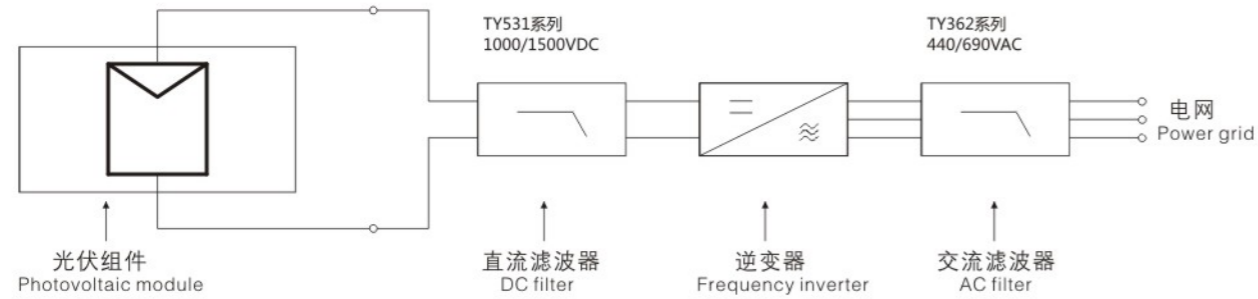
(电气参数表)

额定电压:	1000VDC Max
额定电流:	25-2500A
耐压测试:	P/N-G: 3500VDC/2S
过载电流:	4 × I <sub>r</sub> at switch on 1.5 × I <sub>r</sub> , 1 minute@Per hour
气候类别:	25/100/21
防护等级:	IP00
阻燃性能:	UL 94V-0
设计标准:	UL1283, IEC/EN60939

- TY531T-"XXX"H 滤波器, 额定电压为1500VDC, "XXX"代表额定电流。  
滤波器TY531M-25, TY531M-50的额定电压为800VDC。

Connection

安装原理图



Insertion Loss

Tested @ 50 ohm system as IEC/CISPR :17

滤波器型号 PART number	共模衰减 (Comm. Mode) -in Mhz						差模衰减 (Diff. Mode) -in Mhz					
	0.15	0.5	1.0	5.0	10	30	0.15	0.5	1.0	5.0	10	30
TY531M-25	65	76	76	60	48	37	52	75	75	62	59	43
TY531M-50	65	76	76	60	48	36	52	75	75	62	59	43
TY531M-75	66	76	76	60	48	35	52	75	75	62	59	41
TY531M-100	65	70	62	44	39	32	67	68	58	47	46	42
TY531M-150	65	70	62	44	39	32	67	68	58	47	46	42
TY531T-250	62	58	51	36	31	21	55	49	40	28	26	22
TY531T-400	62	58	51	42	33	18	55	49	44	35	29	18
TY531T-600	62	58	51	42	33	18	55	49	44	35	29	18
TY531T-800	62	58	51	42	33	18	55	49	44	35	29	18
TY531T-1000	62	58	51	42	33	18	55	49	44	35	29	18

Mechanical Specs

(安装尺寸图)

单位(Unit): mm

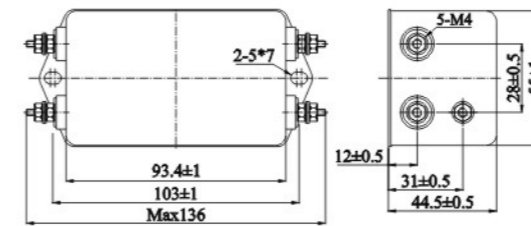


Fig1

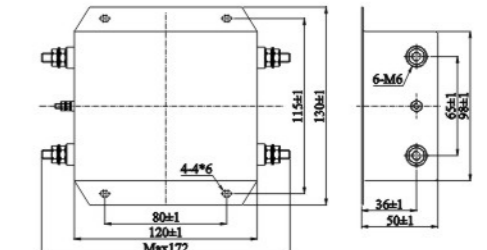


Fig2

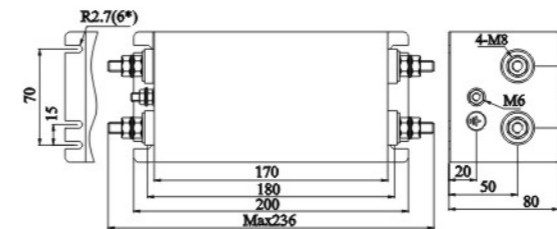


Fig3

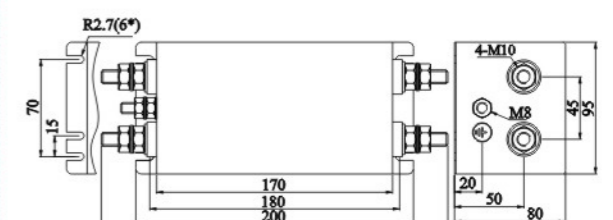


Fig4

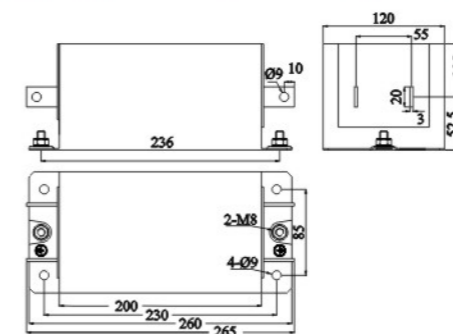


Fig5

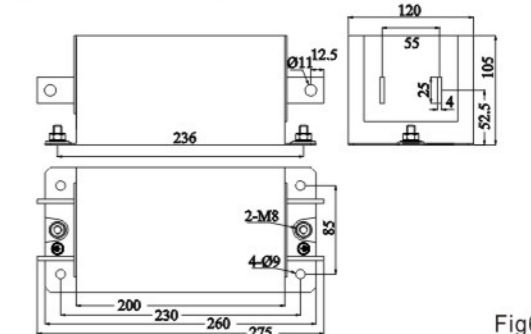


Fig6

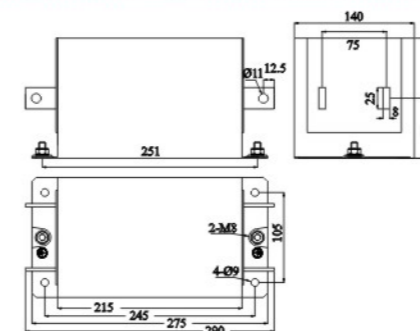


Fig7

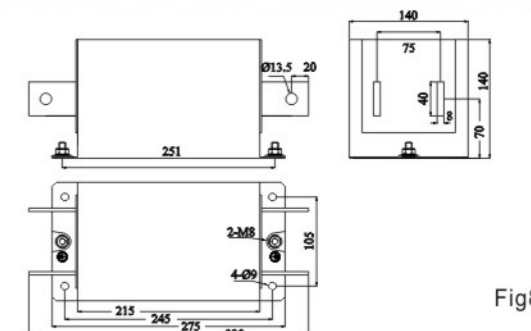


Fig8